

# Little Venice End of Terrace House Extension and Full Refurbishment

Mansard roof, rear and lower ground floor extensions and alterations of family home

LOCATION

*Little Venice, City of Westminster W9*

STATUS

*Completed*

USE

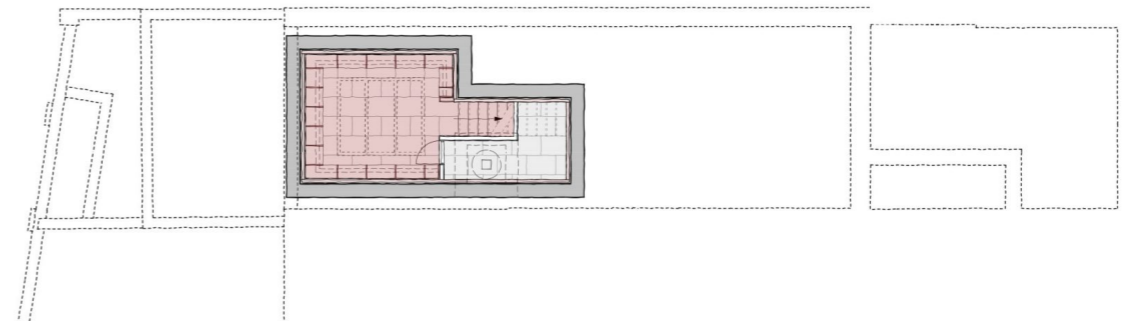
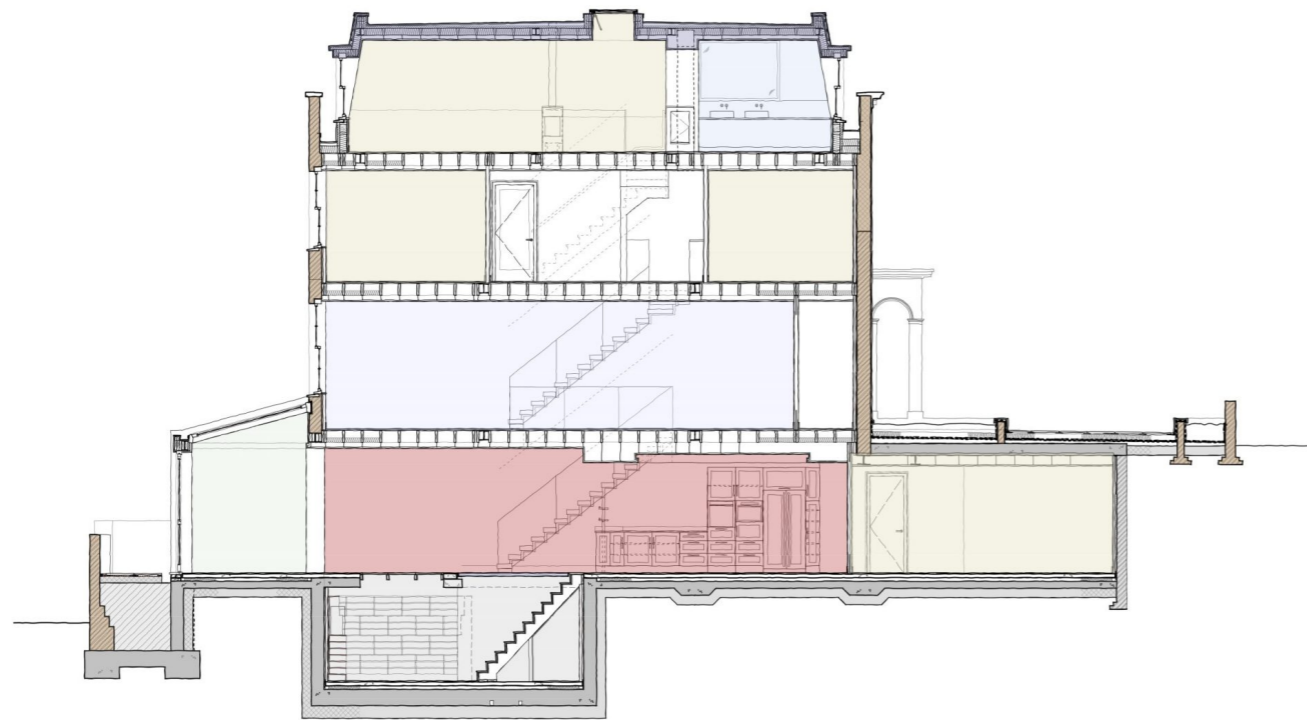
*Residential*

CLIENT

*Private*







# Contextual design to enlarge and improve the original house

The existing house was originally designed as a narrow three storey 'bookend' to the grand terrace of 4 and 5 storey houses along Clifton Villas.

Our proposals incorporated the demolition of the existing roof and the addition of a second-floor mansard roof extension including dormer windows to the front and rear.

At the rear we removed non-original rear addition and rebuilt it in a more composed manner to improve the internal organisation of the house. A glazed lean-to conservatory was also added to increase floor space and improve access to the enclosed rear garden.

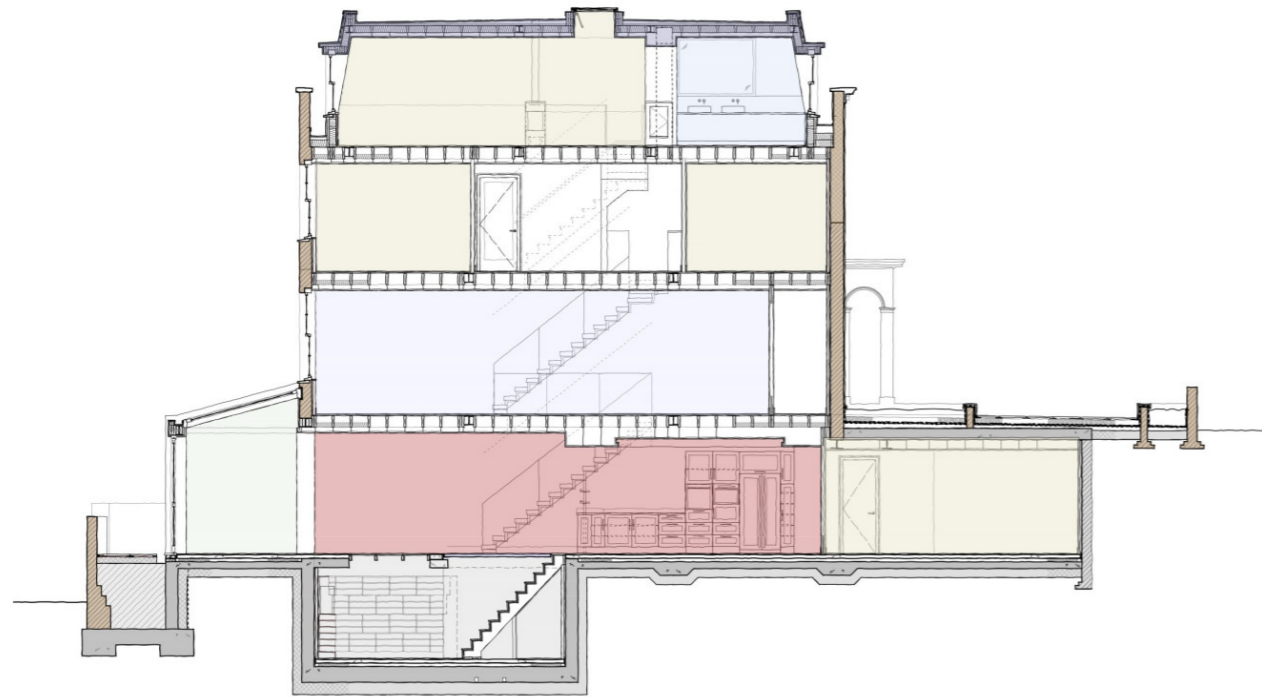


# Alterations to the whole house

The house was refurbished and reorganised at all floor levels and our services included detailed design and coordination of the external envelope, structure, fixtures, fittings and finishes of the house.

The architectural interiors included new bathrooms, kitchens, fitted joinery and storage and a subterranean wine cellar viewed from a structural glass floor at lower ground floor level and accessed via a hydraulic opening in the floor.

We took the project through from sketch design and feasibility stage and obtained planning consent. We prepared the detailed technical design, pricing and construction drawings and oversaw the construction works on site.



The development is located in Little Venice, City of Westminster, London W9.

