

# Former Normansfield Hospital, Richmond Upon Thames

Restoration and transformation of Grade II\* former hospital in to development of 91 residential apartments.

LOCATION

*Richmond Upon Thames, TW11*

STATUS

*Completed*

USE

*Residential*

CLIENT

*European Premier Properties Ltd*

CONTRACT VALUE

*Â£15million*

CONTRACTOR

*Eramo Developments Ltd*















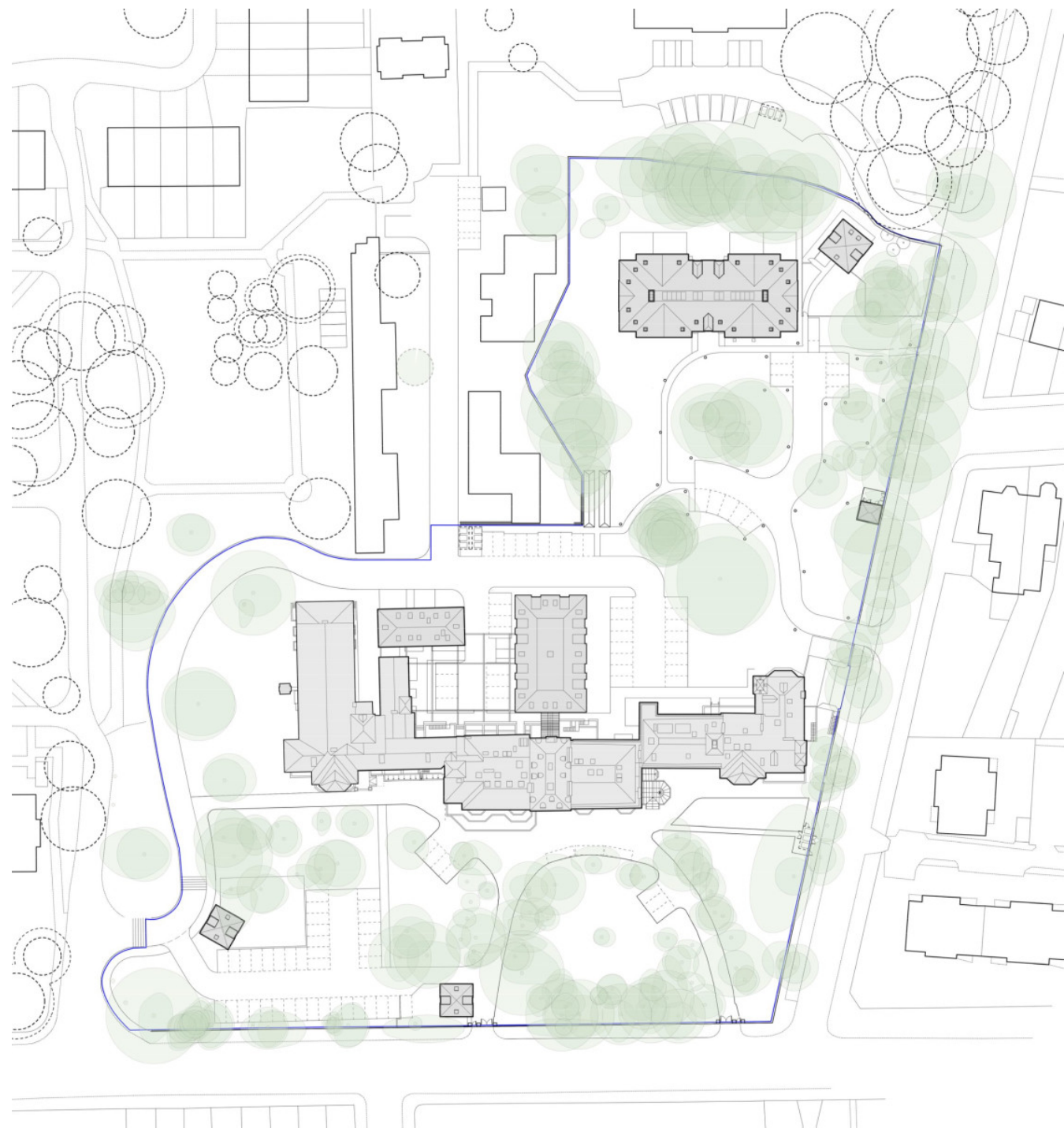


# A grand building that had fallen in to disrepair

The Grade II\* former hospital in Normansfield, Richmond upon Thames had fallen in to disuse and disrepair when our clients came to us with a brief to restore and develop the building and site for new high quality residential apartments.

The main building on the site was the hospital and former home of Dr John Langdon-Down, the Victorian pioneer in the treatment of what became known as Down's Syndrome. Langdon-Down and his family had gradually extended what was their family home in to a grand range of buildings, each slightly varying in style. After the hospital was taken over by the NHS in the early 1950's some rather crude interventions were carried out to the listed buildings.





## A two phase development

We obtained planning and listed building consent for two phases of development to create the new apartments. Phase 1 of the development was to use the former hospital building and Phase 2 to create a new build block within the hospital grounds.



# Phase 1

Phase 1 of the project involved the formation of 63 high quality apartments and restoration of some fine interiors within what was originally the house of Langdon-Down and his family and which he gradually extended into a range of buildings, each slightly varying in style. Our proposals included removing the modifications made by the NHS in the 1950's and the original building form and massing restored.





The original building had originally been placed on the EH 'At risk' register, but as a result of its sensitive restoration the building has now been formally removed from the register.

The project has also received an award from the Teddington Society for the quality of design and workmanship in the restoration of the Grade II listed building.





## Phase 2

Phase 2 of the project involved the construction of 28 apartments in a new build block designed in a sympathetic architectural style.





The development is located in Richmond Upon Thames, South West London.











