

# Gladwell Road, Crouch End

## Glazed Rear and Dormer Extensions and Whole House Internal Refurbishment

LOCATION

*London Borough of Haringey, London N8*

STATUS

*Completed*

USE

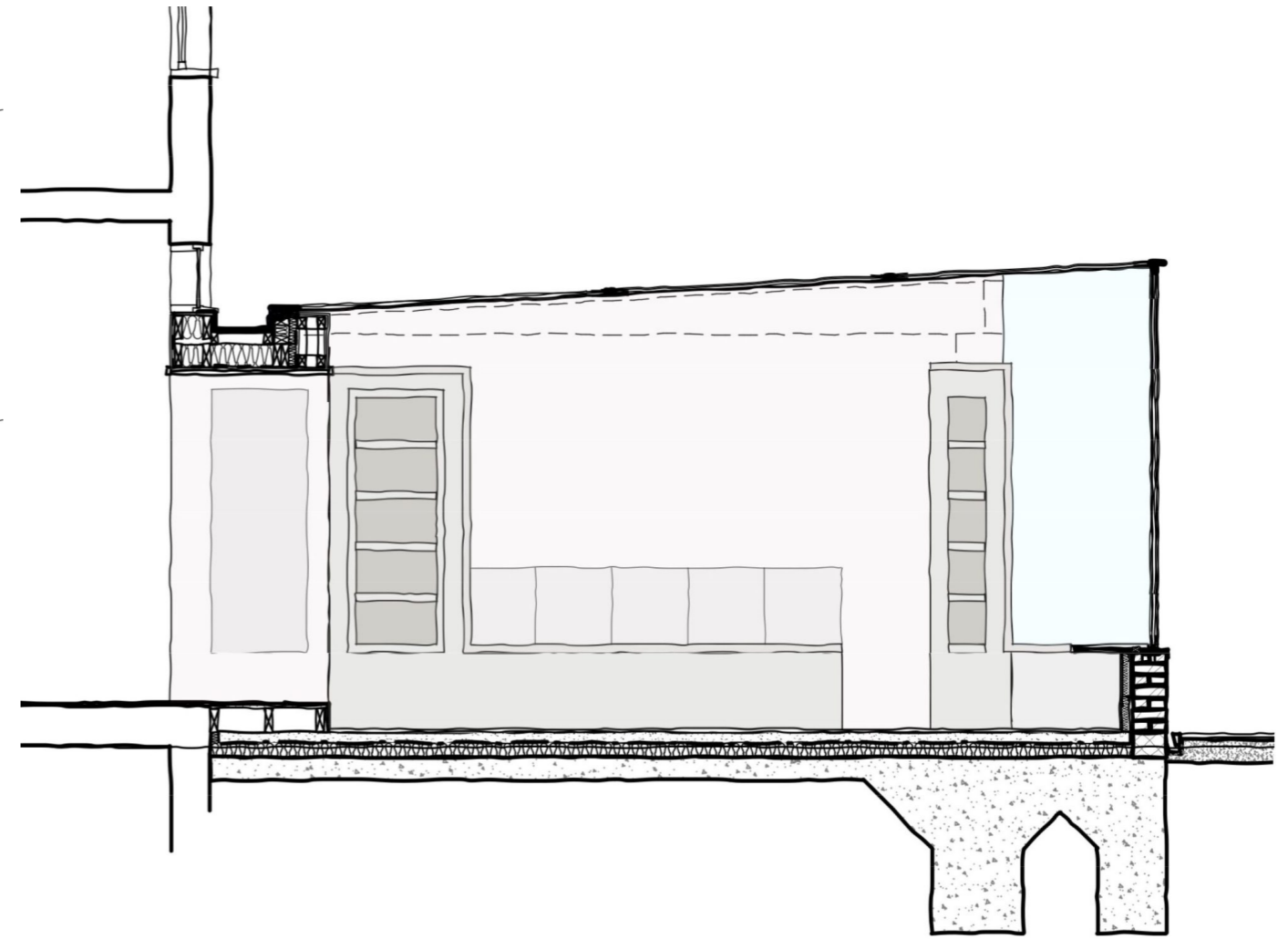
*Residential*

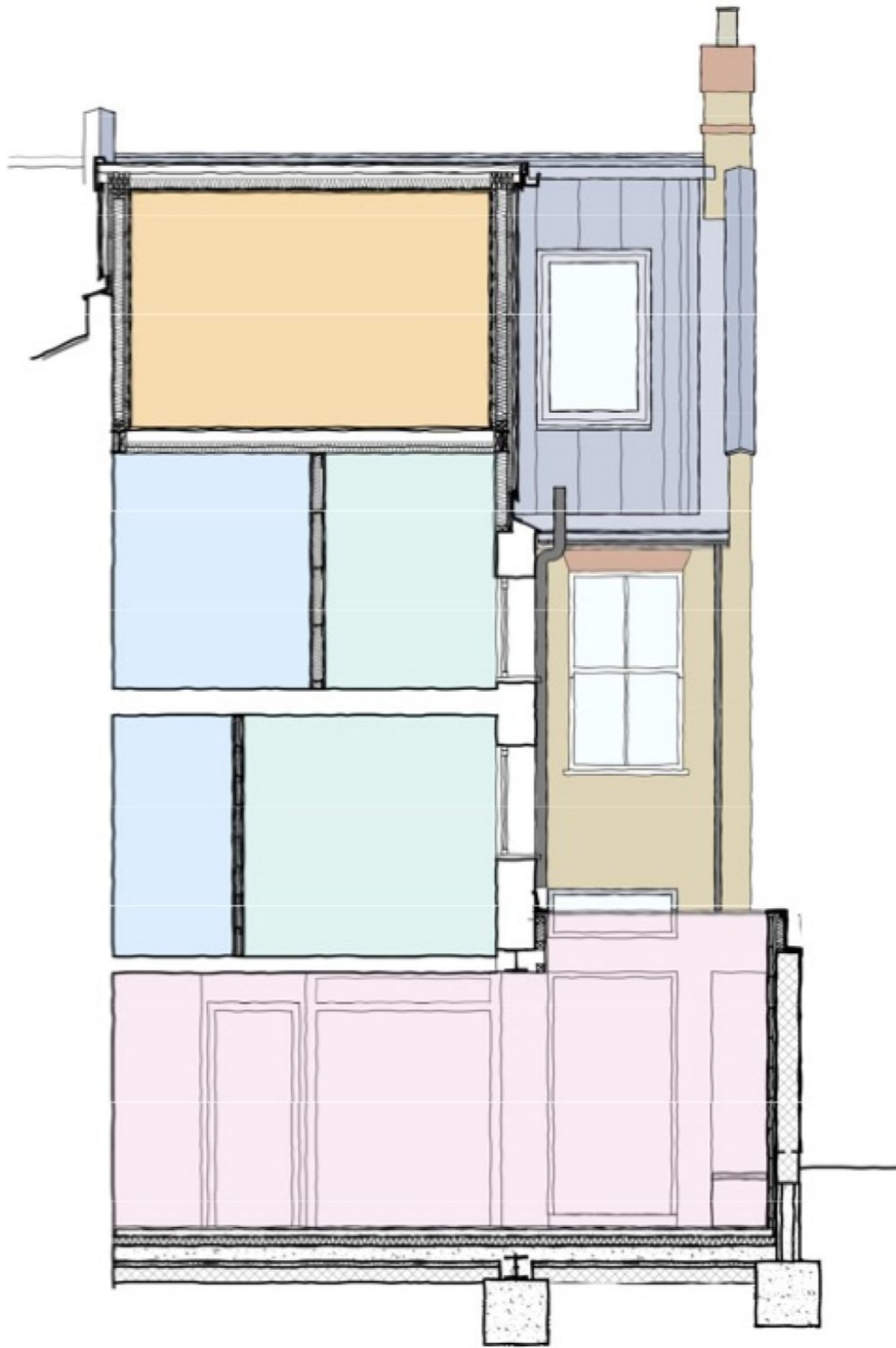
CLIENT

*Private*











## Enhancing the space, light and flow of a Victorian house

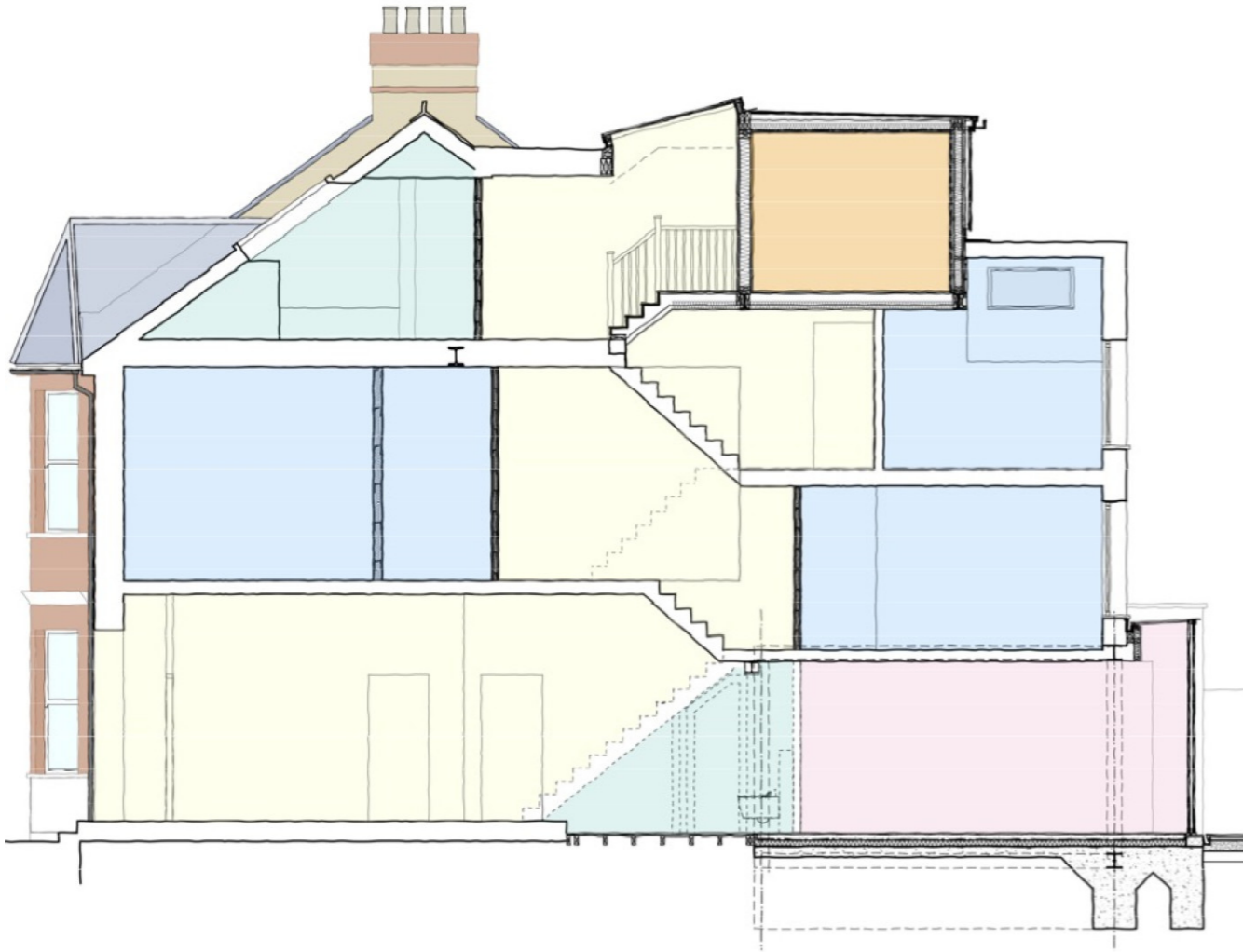
Our clients approached with a desire to extend and improve their Victorian semi-detached house in a contemporary style to suit their young family.

We designed a highly glazed rear and side wraparound extension at ground floor level which created a new kitchen / dining space and improved relationship with the compact rear garden. Specialist structural glass is used for the window and roof above the dining area and a minimal framed patio doors and rooflight from the kitchen. The space between the original house and the rear extension takes the form of a timber lined 'portal' that transitions between the more traditional reception rooms and the kitchen extension.

## Refurbishment and extension of the family bedroom and bathroom floors

On the upper floors we created a luxurious master bedroom suite on the first floor and a new arrangement of secondary bedrooms, bathroom and study spaces in the closet wing and second floor.

The existing rear dormer was replaced and extended across to the rear closet wing with a new contemporary appearance included zinc cladding and frameless structural glass windows and rooflights in the same style as the rear extension glazing.





The development is located in Muswell Hill, London N8.

## Concept design to completion

We took the project from concept design, through to planning and then on to the production information and construction stages. Planning was split in to two separate elements, the first for the single storey rear extension and the second for the rear dormer extensions. Planning consent was obtained in 2020 and 2023 respectively.

We designed lighting layouts and custom fitted joinery, bathrooms and kitchens to our clients specific requirements. Finishing materials were carefully specified to in a refined, contemporary palette. The works were completed in 2024.

