

Linden Gardens Internal Refurbishment, Kensington and Chelsea

Internal refurbishment of lower ground floor flat in grand Edwardian mansion.

LOCATION

Kensington and Chelsea, W2

STATUS

Completed

USE

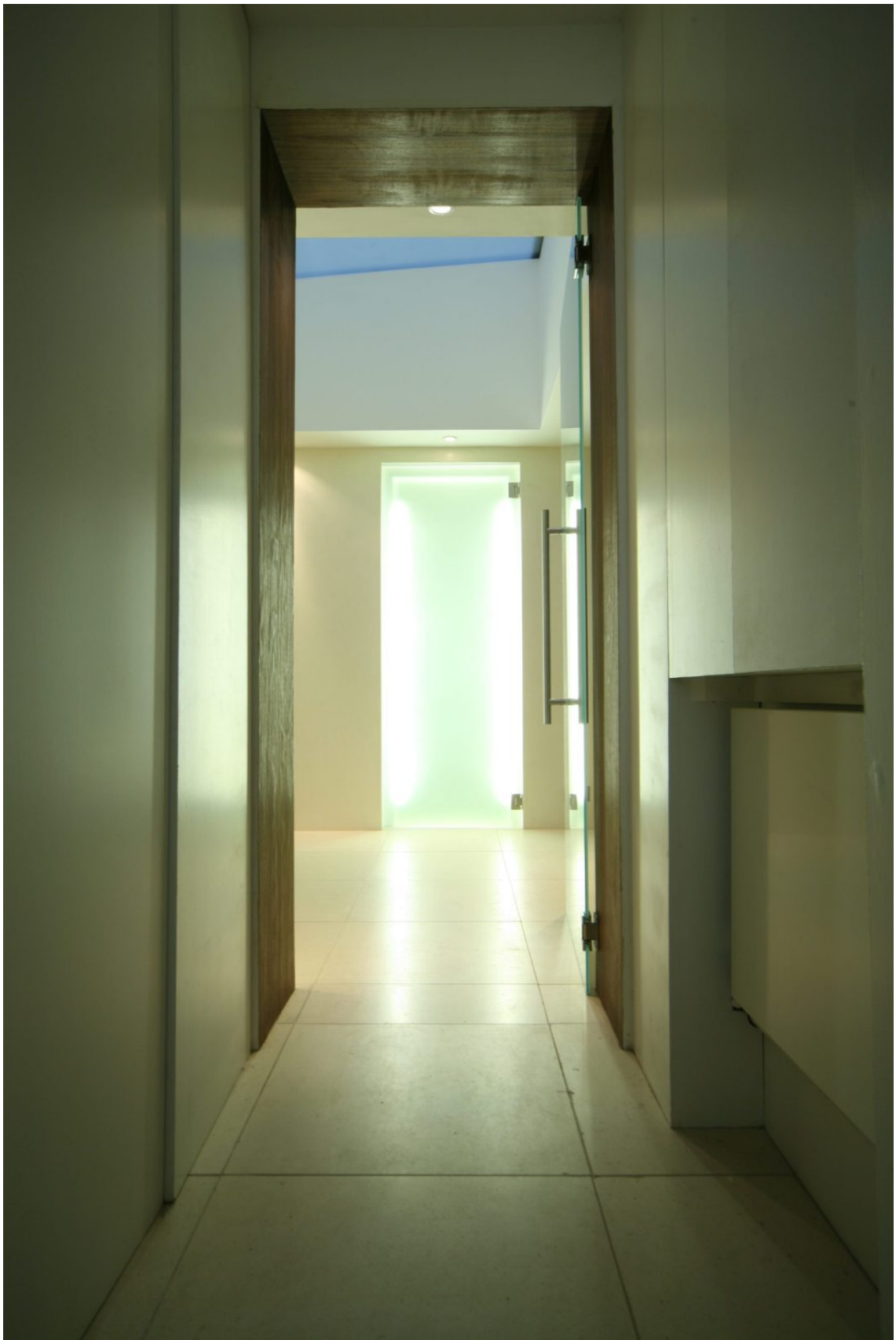
Residential

CLIENT

Private









This project comprised the rearrangement of the flat in a contemporary style and the insertion of a large structural glass skylight that transforms the previously gloomy and cluttered spaces of the entrance hall, corridor, kitchen and bathrooms.

The new spaces complement the elegance of the grand living rooms with their retained period details.

The development is located in Notting Hill, Kensington and Chelsea, London.

