

Macklin Street

Roof top development of eight apartments above a 1920's warehouse in the heart of Covent Garden.

LOCATION

Covent Garden, London WC2B

STATUS

Completed

USE

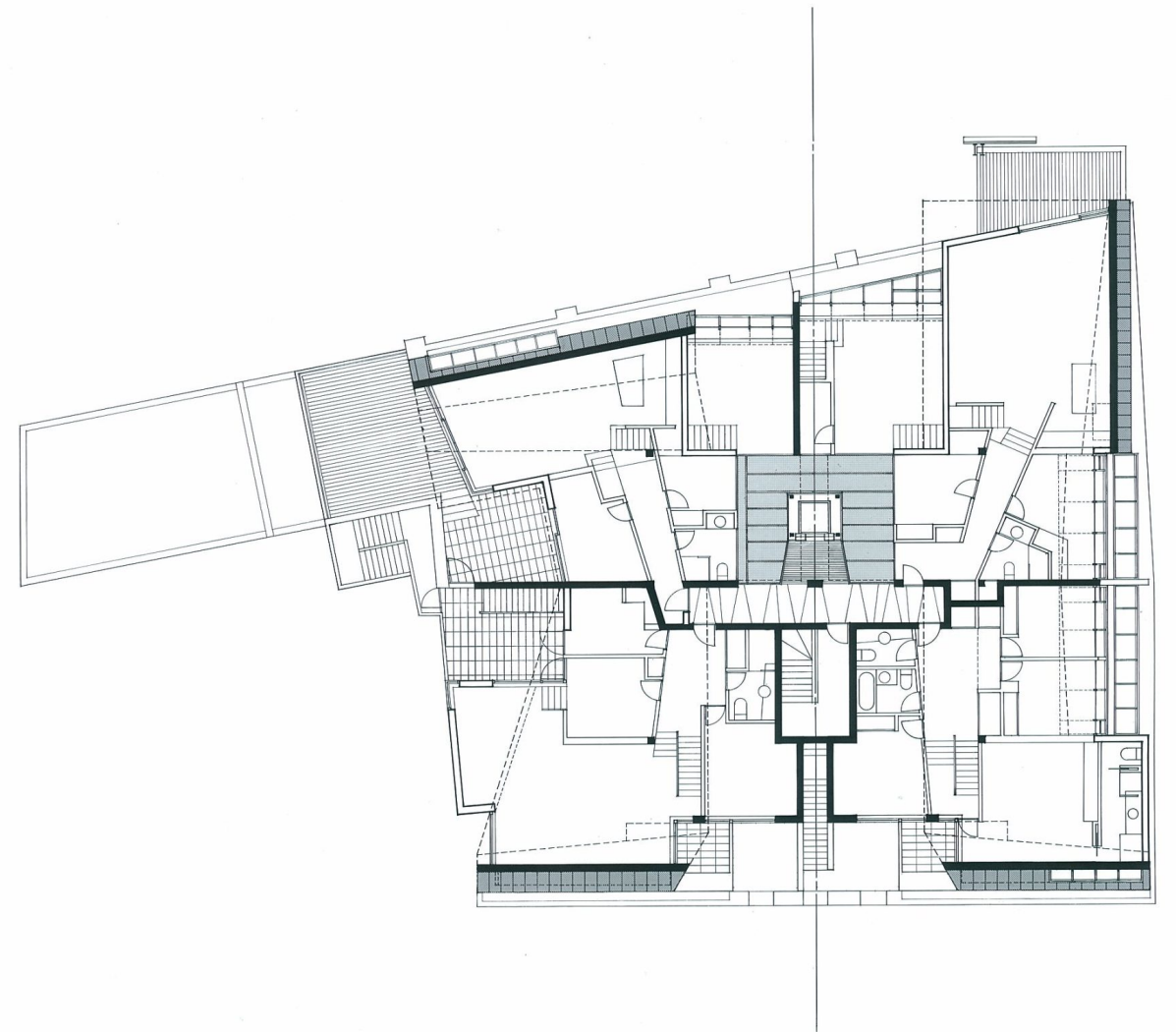
Residential

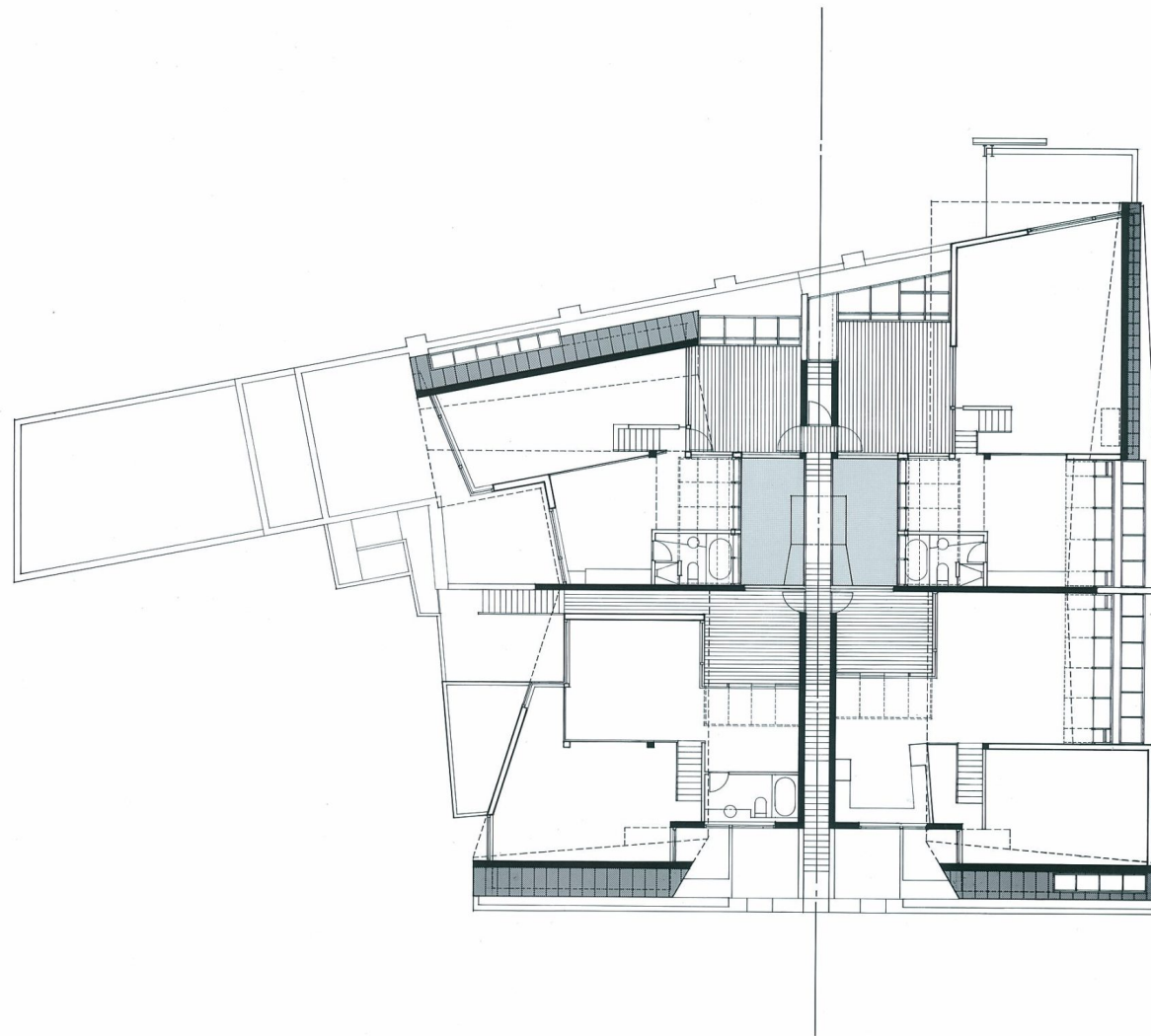
CLIENT

Citychance Ltd.











Maximising development value

Our clients approached with a brief to maximise the development value of the 1920's warehouse building they had acquired in Macklin Street, Covent Garden.

Our design allowed eight remarkable market sale apartments to be created over three floors.



Complex geometry hidden from street level

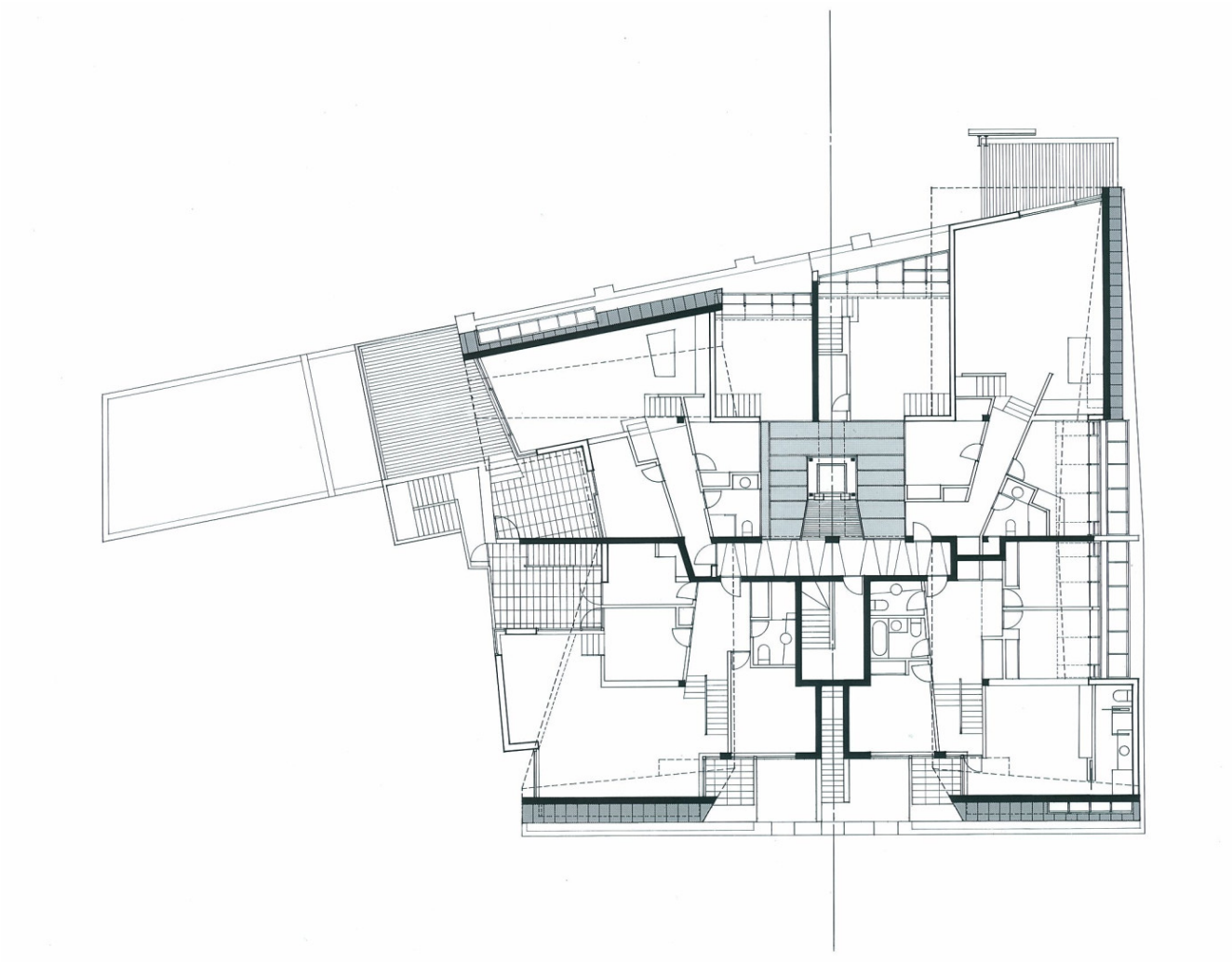
The new roof form is a complex piece of geometry designed to be almost invisible from ground level and to avoid overlooking or overshadowing the buildings around it.

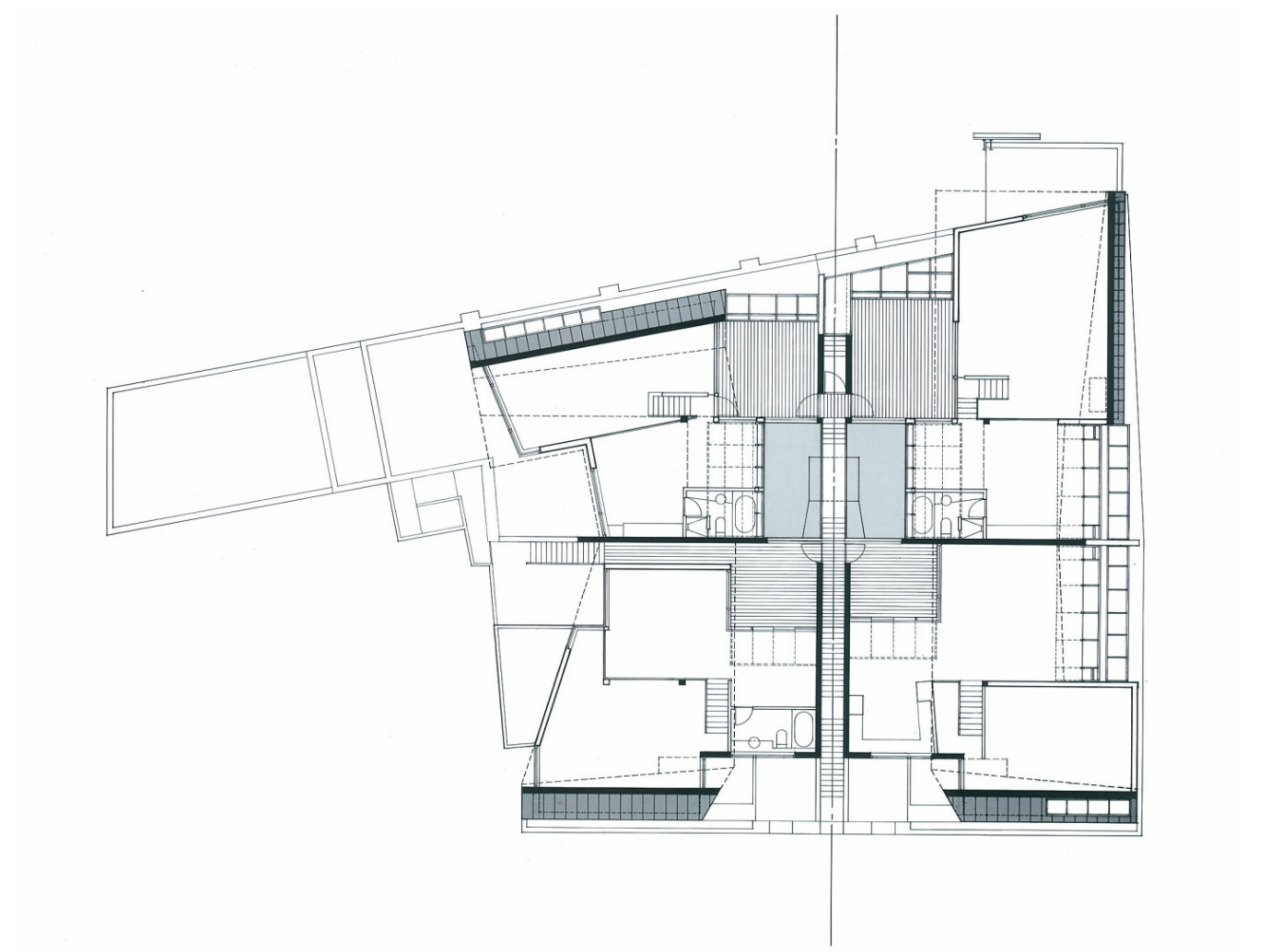


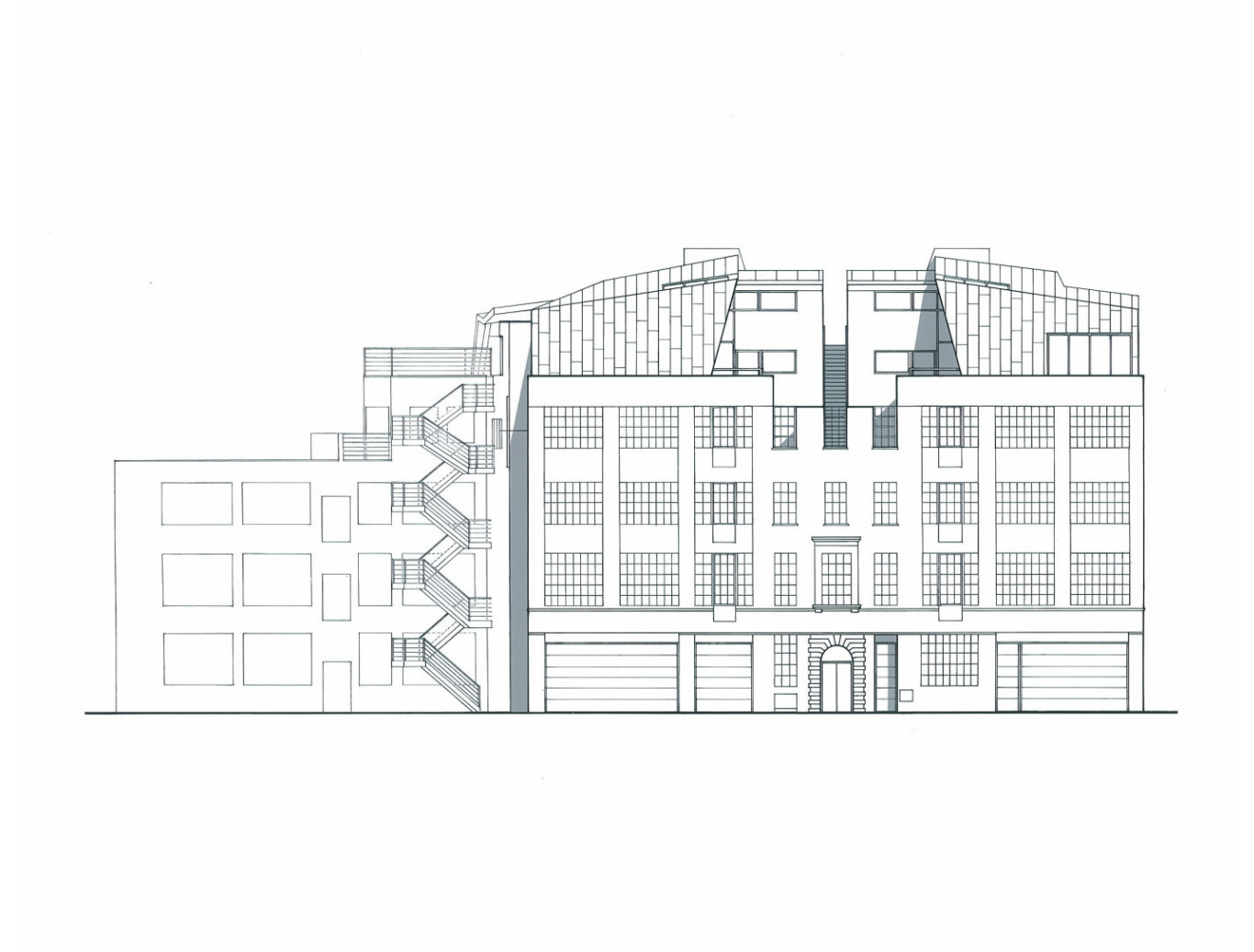
The resulting scheme

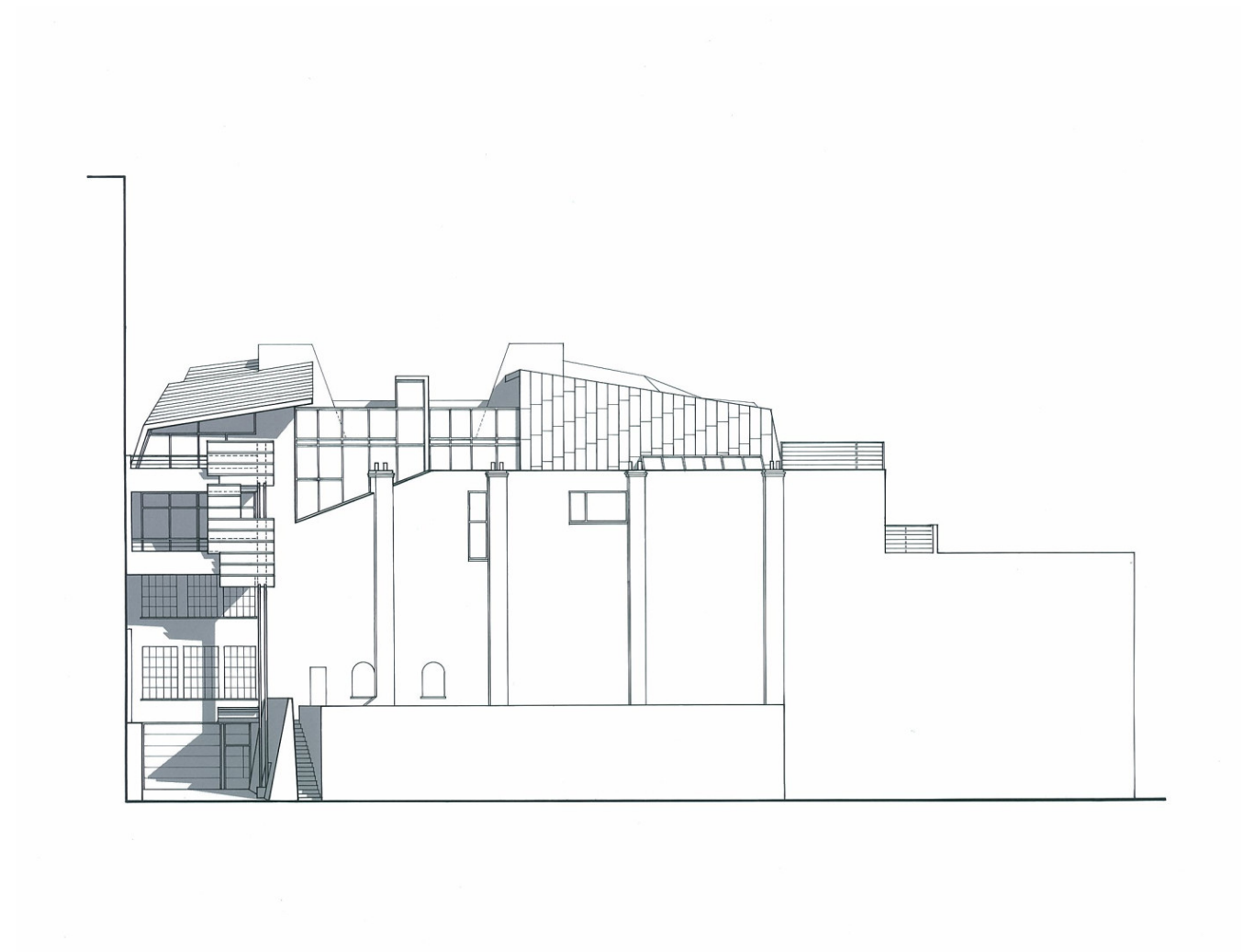
has the feel of an inward looking community in the clouds. The project was published in Building Design magazine.

At the heart of the layout was a lightwell containing a glazed lift around which were grouped screened private terraces belonging to the flats.









The development is located in Covent Garden, Central London.