

Putney House and Garden Refurbishment

Alterations and improvements to the internal layouts and rear garden.

LOCATION

Wandsworth Council, Putney, London SW15

STATUS

Completed

USE

Residential

CLIENT

Private Client

CONTRACT VALUE

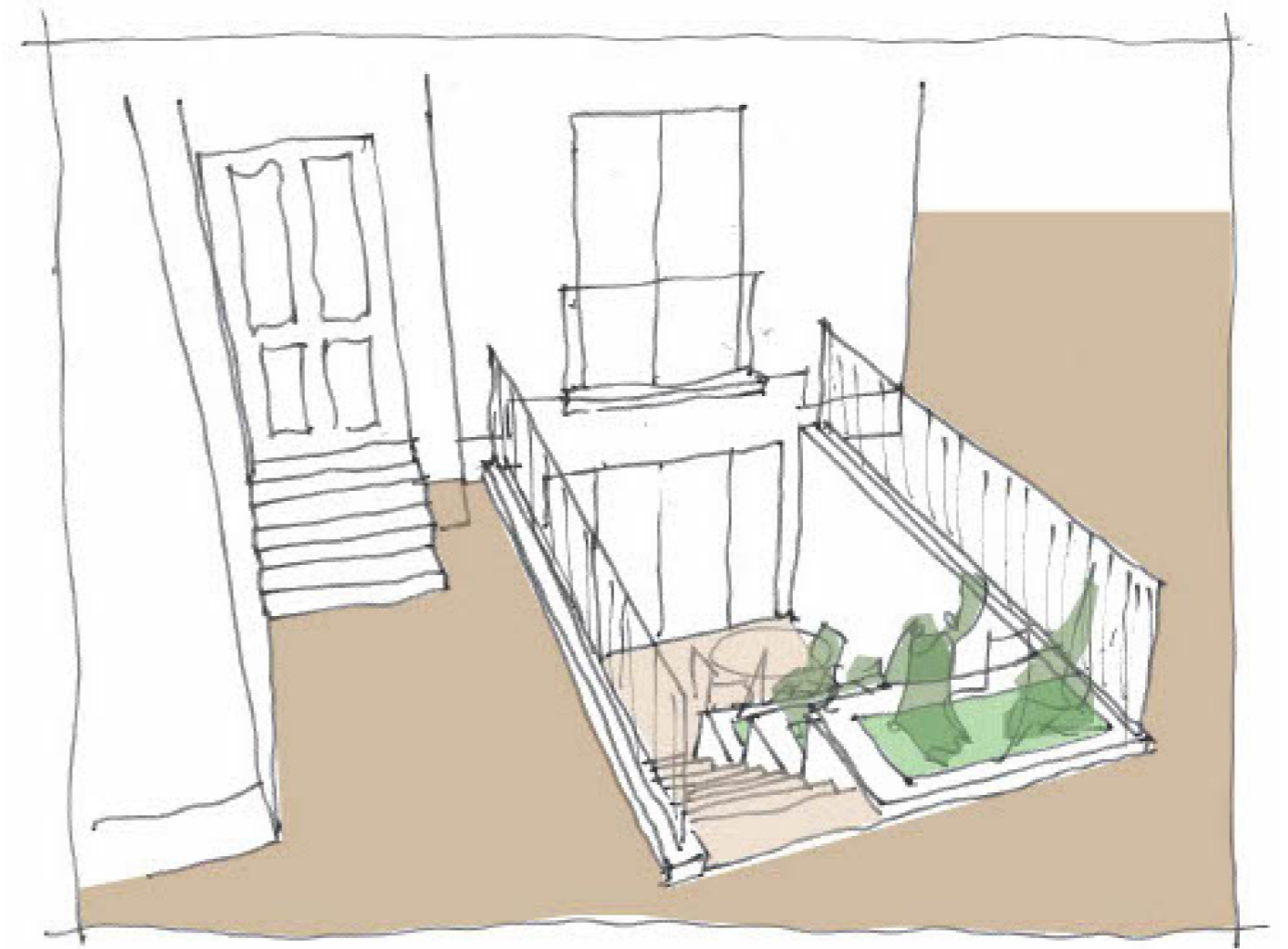
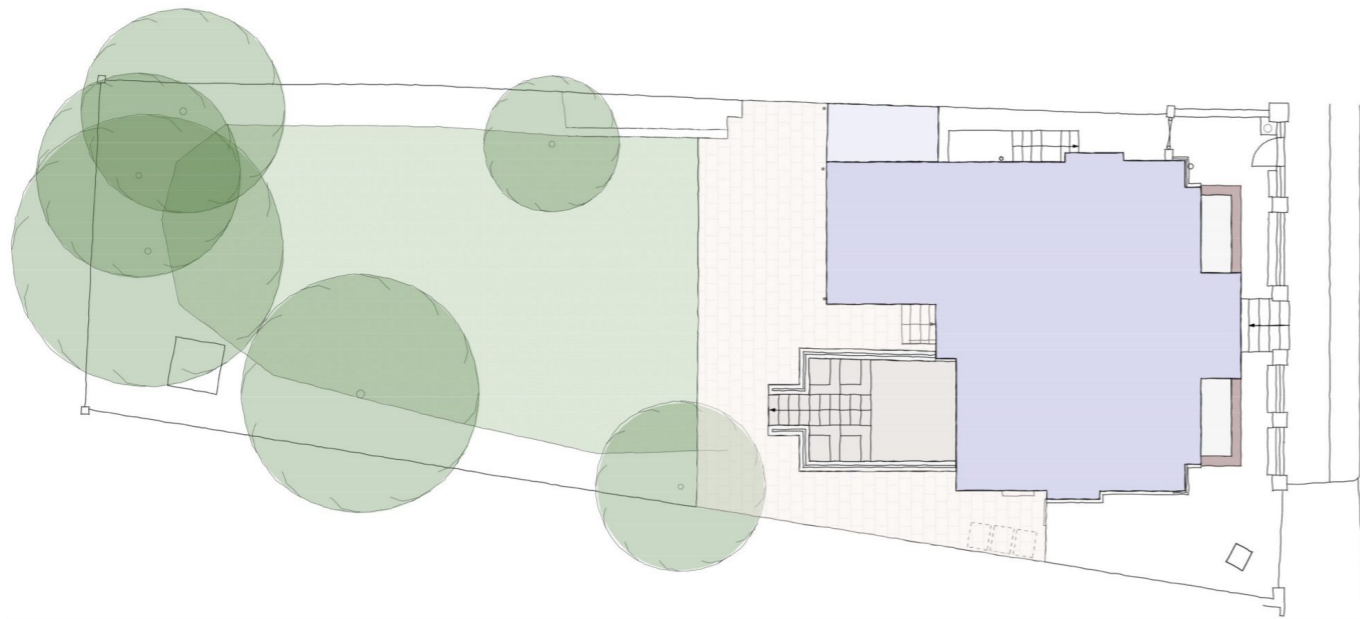
Approx. £350k

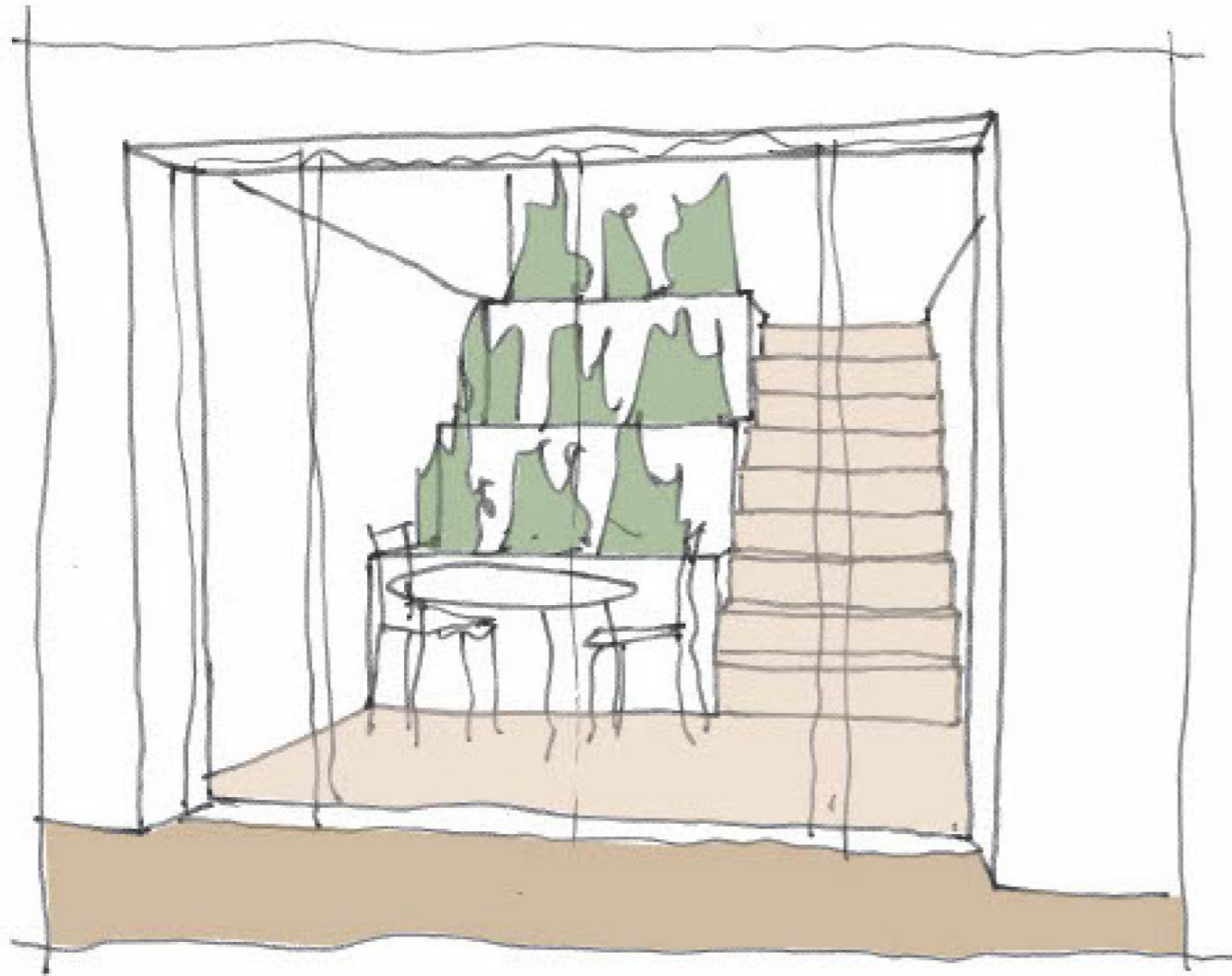
CONTRACTOR

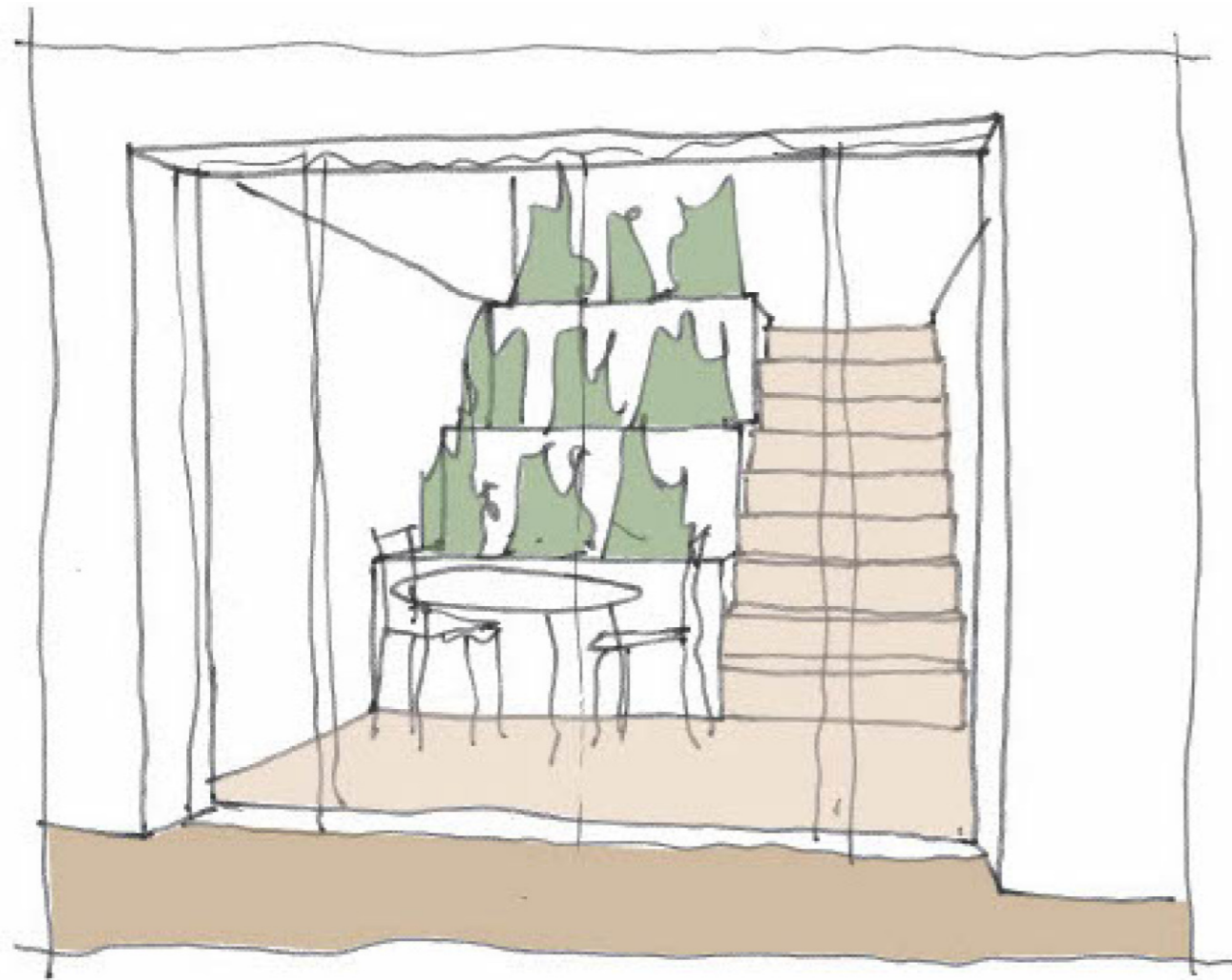
[*Clearly Renovations*](#)











Improving the relationship between house and garden

Our clients contacted us after purchasing this detached family house in Putney to explore ideas for improvement of the lower ground floor spaces and the relationship between the house and garden.

The existing steps up to the rear garden were cramped and oppressive, reducing light to the lower ground floor living spaces and views and access to the garden.

We proposed a generous lower level patio with shallow steps and stepped planters to bring additional light in to the basement level and to improve the quality of the internal and external living and entertaining spaces.



Creating generous and functional kitchen and family dining spaces

Alongside the works to the rear patio, we took advantage of the opportunity created by the dampproofing works required to the lower ground floor to design a new internal layout with a more open and functional kitchen, dining and space.

Extending improvements throughout the house

The scope of the project developed further to include subtle interventions to improve key rooms on the upper floors and the addition of solar panels to cumulatively improve the long term function, quality and efficiency of the house.

We prepared a full technical package of drawings and specification for building regs and tender purposes and oversaw the construction works on site through to completion in 2025.



The development is located in the London Borough of Wandsworth, Putney, London SW15.

