

# RADA Mixed Use Development, Camden

Mixed-use development of residential  
apartments and teaching spaces for the  
Royal Academy of Dramatic Art.

LOCATION

*Camden, WC1E*

STATUS

*Completed*

USE

*Cultural & Arts, Residential*

CLIENT

*RADA & Groveworld Developments*

CONTRACT VALUE:

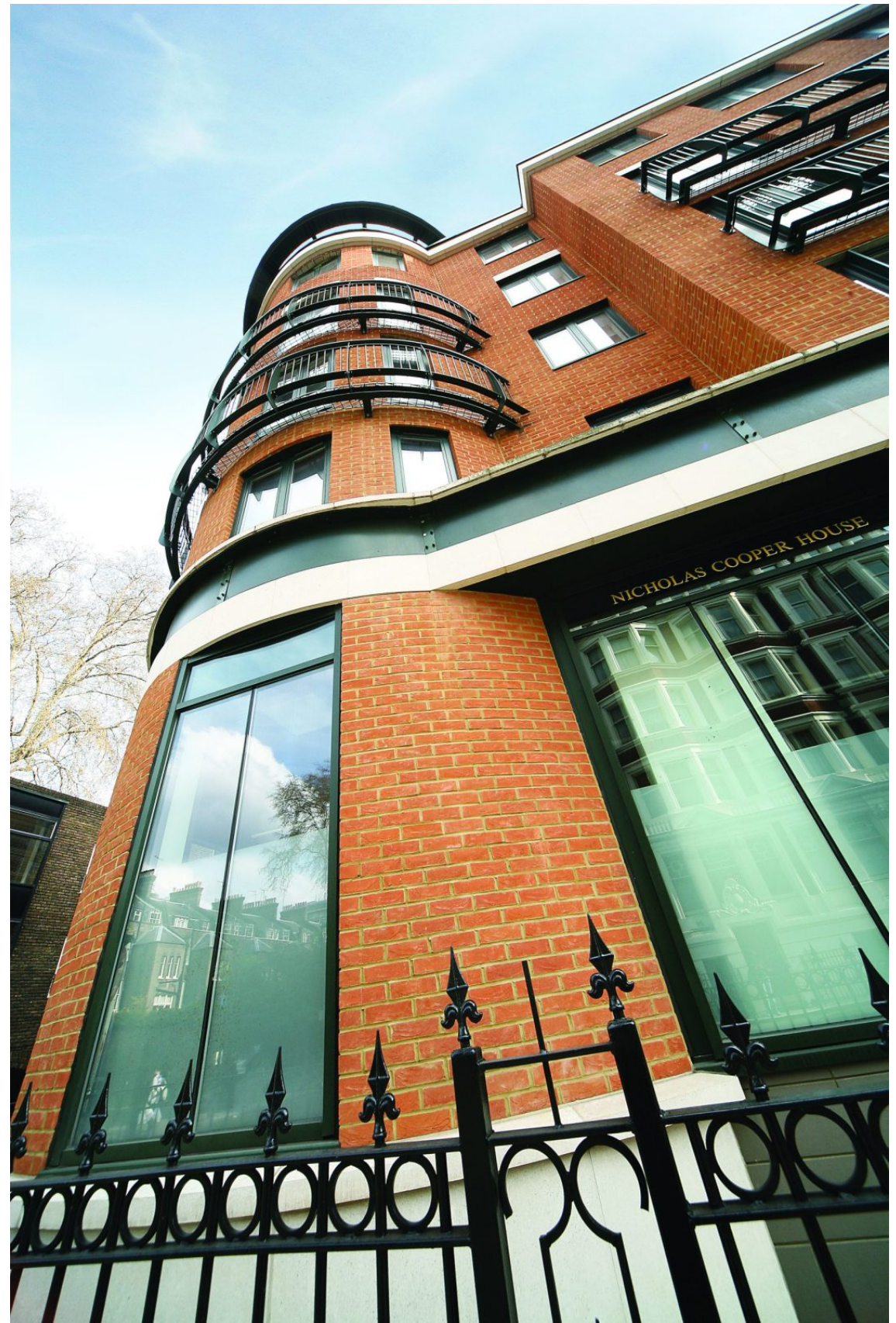
*£3.5m*















The development is located in the Camden, North London.

This £3.5m mixed use development was a partnership between the Royal Academy of Dramatic Art and Groveworld Developments.

Haines Phillips designed and obtained planning consent for twelve high quality apartments for private sale above new, extended teaching premises.

The value of the new apartments cross funded the erection of 12,000 square feet of new shell space for an extension of the adjoining RADA teaching premises.

The practice was subsequently responsible for the fitout of the RADA teaching spaces and other major projects for development and extension of the adjoining properties.



