

Redcliffe Street Surgery, South Kensington

Conversion of a Victorian house in the South Kensington Conservation Area into a Doctor's Surgery and Medical Centre.

LOCATION

Royal Borough of Kensington and Chelsea, SW10

STATUS

Completed

USE

Commercial

CLIENT

Drs. Farrer and Napier; KCW Health Authority





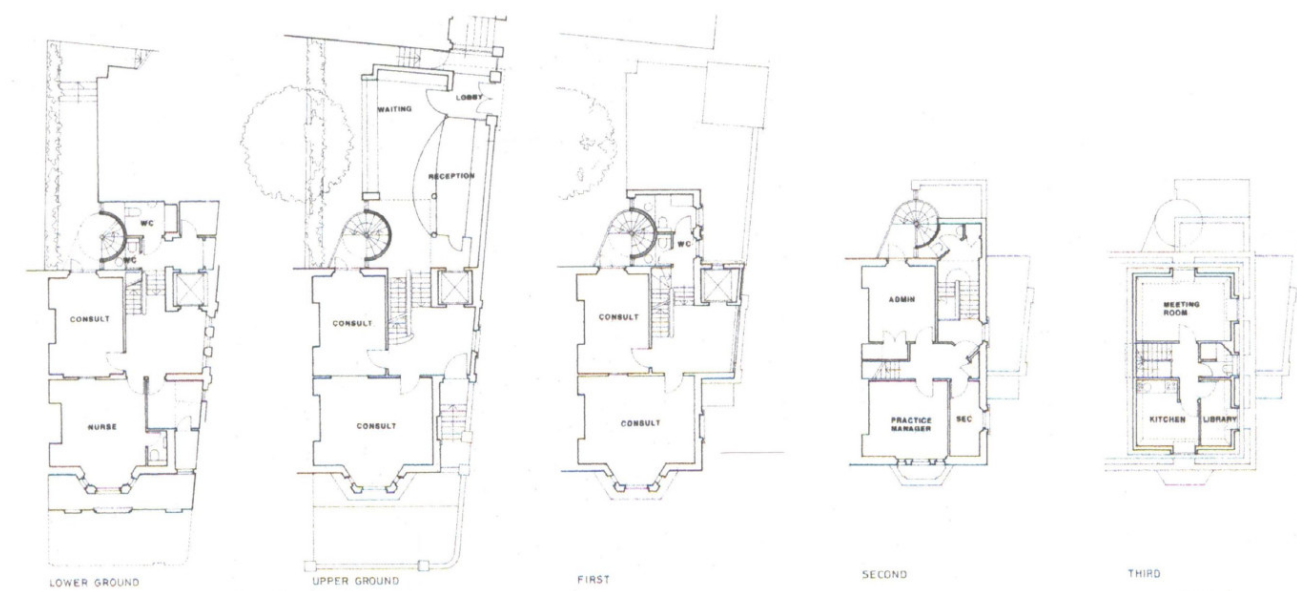


Conversion of an end-of-terrace Victorian house into a Doctor's Surgery and Medical Centre

The existing building, in the South Kensington Conservation Area, was sympathetically adapted to create additional accommodation for the medical centre. A sub-basement was excavated below the building to accommodate toilet facilities and a lift-pit, and a new 'bustle' constructed on the side elevation houses the lift shaft and landings essential for public access. The building makes a positive contribution to the streetscape with a new stained glass window, illuminated from within at night.

The practice also designed all the purpose-made built-in fittings including examination couches, storage units and vanity units within the consulting rooms.

A new rear extension at ground level accommodates the reception facilities and gives access to the surgeries via an open-riser stair. This device allows visual contact to the upper and lower ground floors, guiding patients to the consulting rooms without the need for signage.



The development is located in Kensington and Chelsea, London.

