

# Ship Street, The Lanes, Brighton

Mixed use development to create a restaurant unit with 3 flats above in the historic Brighton Lanes quarter.

## LOCATION

*Brighton, Sussex BN1*

## STATUS

*Completed*

## USE

*Residential & Commercial*

## CLIENT

*Private*













## Revitalising a dilapidated but prominent building

Our Ship Street project is a mixed use development on a corner site in Brighton's historic and vibrant Lanes quarter, just a couple of hundred meters from the seafront.

We refurbished, reorganised and extended a dilapidated four story building to create a restaurant unit on the ground and basement floors with three high quality residential apartments on the upper floors above.





## Full design, detailing and specification

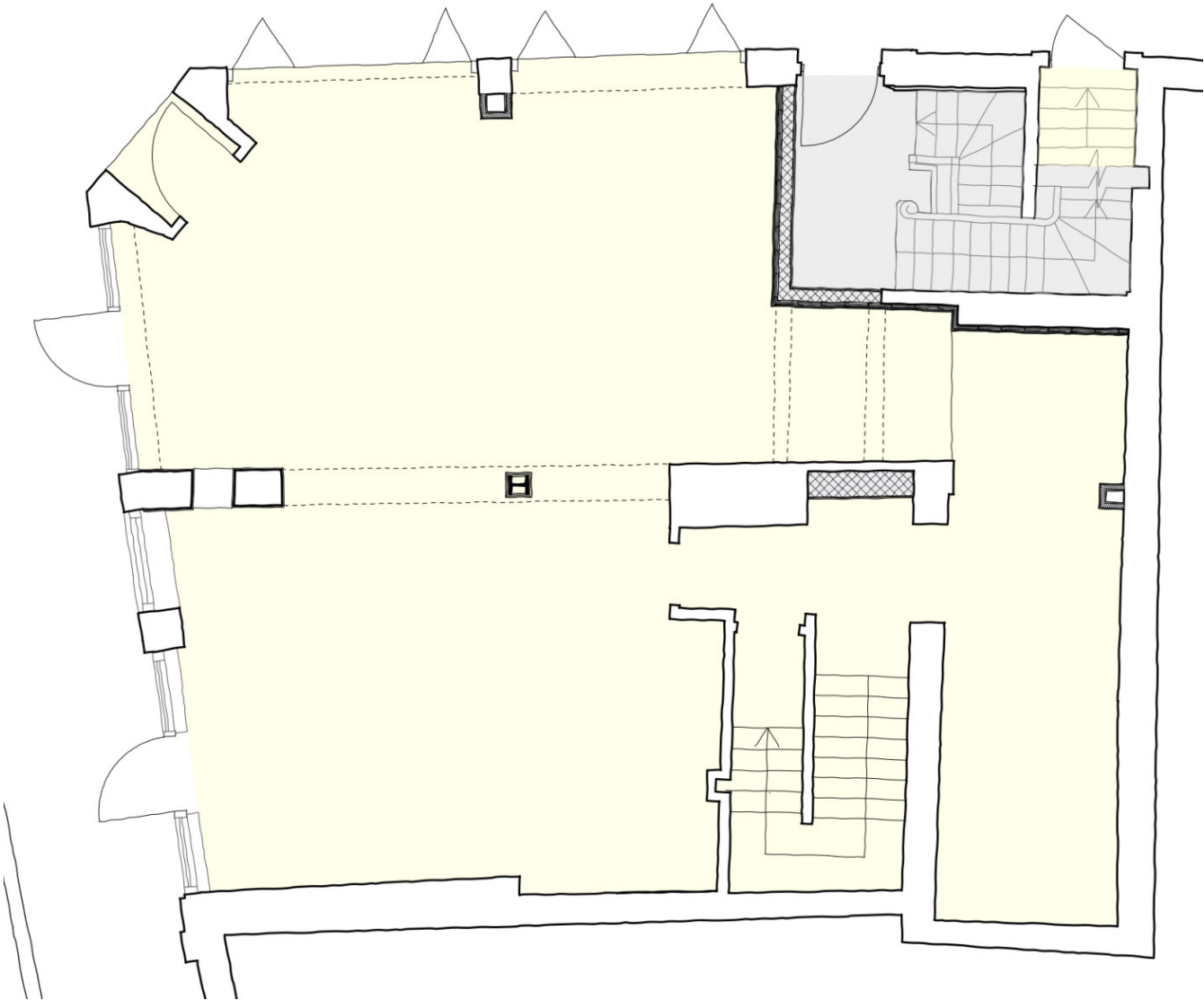
Through careful consultation with the client, we prepared the design of all elements including bathrooms, joinery, finishes and colour schemes.

Working with a modest budget, the details and finishes for each flat create a contemporary, high quality design that makes subtle references to period details appropriate to the original building.

All new and upgraded building elements incorporate high levels of thermal efficiency and insulation and sound separation between the restaurant unit and apartments.

The ground floor contains the restaurant unit and residential entrance.

The three new flats are arranged across the first, second and third floors above.











The development is located in the South East of England in Brighton, Sussex.













